

Shanghai Omni Laser Skinology CO.,LTD



Photodynamic Therapy System



ISO
13485



Health
Canada



APOSTILE

Aesthetic and Medical Equipment Manufacturer

EXACT WAVELENGTH EFFECTIVE POWER

PDT(Photodynamic Therapy System) is a photo-sensitive topical agent applied to the skin and activated by an effective power light source promoting skin rejuvenation for acne treatments, acne scar treatments, anti aging treatments, rosacea treatments, skin whitening, wrinkle improved, skin repairing and sensitive-skin repairing. This can be accomplished through different wavelengths 420nm blue light, 469nm blue light, 525nm green light, 590nm yellow light, 633nm red light and 830nm infrared light.

Smart Design, Safety Treatment

As the safety concept is more and more intensive, more and more clients or patients would like to choose PDT to do skin-care treatment, as PDT has following features :

01

Stimulates the body's own cellular mechanisms by photomodulation

Not a laser or an IPL so no heat, no side effects or downtime

02

03

Non-invasive, non-ablative safe therapy

No damage to sub-dermal tissue

04

05

Relaxing and calming experience

06

Compatible with existing skin rejuvenation techniques such as Botox, IPL, Laser resurfacing and cosmetic surgery such as peeling surgery

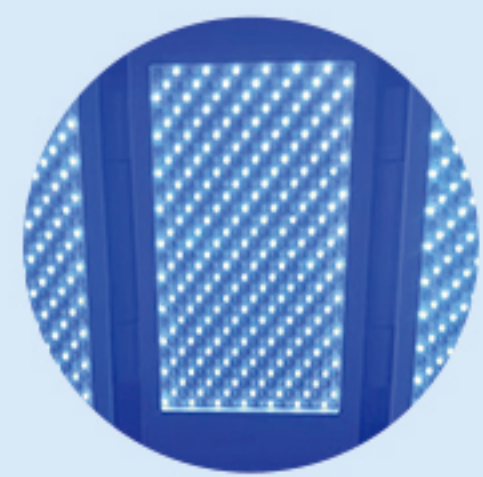


Application



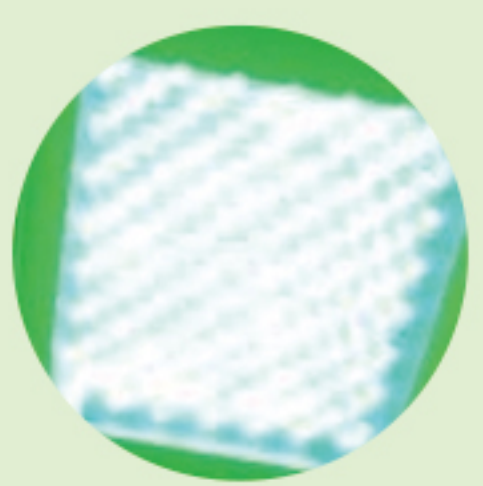
Red Light at 633nm

Reduction in Fine Lines&Wrinkles,Improved Skin Texture,Clearance of Photo Damaged Skin ,Skin Texture,Clearance of Photo Damaged Skin,Skin Repairing,Micro-circulation Improved



Blue Light at 469nm or 420nm

Acne,Inflammation and Redding of the Skin Therapy, Comedones Improved



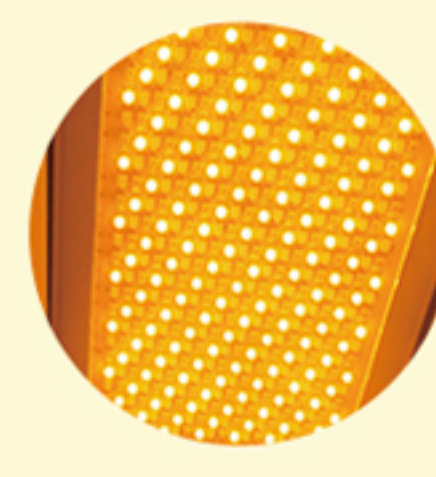
Green Light at 525nm

(Reduces pigmentation through penetration into base skin layers.Preventss the forming of fleck,gravid and aging pigment to keep skin smooth and bright)



Infeard Therapy at 850nm or 830nm

Osteoarthritis/sports injuries such as knee,ankle, shoulder,etc/burns,scrapes,and pain relief from cuts/ ulcers/fibromyalgia pains/bunion pain/tendinitis/ myofascial pain/minimize recent nerveinjury/wound healing,especially in diabetics



Yellow Light at 590nm

(Help the lymph system to detoxify your body)



Built-in Clinical Programs

During a decade of cooperation with European dermatologists, Omni-Laser summarized many advanced and practical clinic data that could be easily chosen on our software :

Products Real Shot



- Anti-aging
- Scar repair
- Dilution of stretch marks
- Burn injury
- Hair regrowth stimulation
- Acne therapy, Keratosis
- Oily skin
- Anti-redness
- Pigment
- Edema
- Plastic treatment aftercare, Inflammation

More clinic info. are waiting for you to reach out...

Advantage	Feature
1.SMD LED lamp	1.Good heat-dissipation system 2.Smaller size, higher density and much more powerful energy output than DIP LED
2.Imported LED lights	Imported from Taiwan, longer life span
3.High output intensity	Real effect in clinic, top-one in China
4.Touch screen	Easy to operate
5.Multiple wavelength	633nm, 469nm, 530nm, 590nm, 830nm or 850nm
6.Interchanged treatment head	One model, multi-function
7.Simple mode and expert mode operation	Easy to operate in simple mode and professional in expert mode
8.Save programme name as needed	Easy to upload the saved programme and simplify work
9.Adjustable power output	Precise for clinic
10.One color	Only one color in the treatment head
11.Two colors	Two colors in the treatment head
12.Three colors	Three colors in the treatment head

Before And After Comparison

Multi wavelength for your choice: 420nm 469nm 525nm 585nm
633nm 650nm 830nm and 850nm



Before



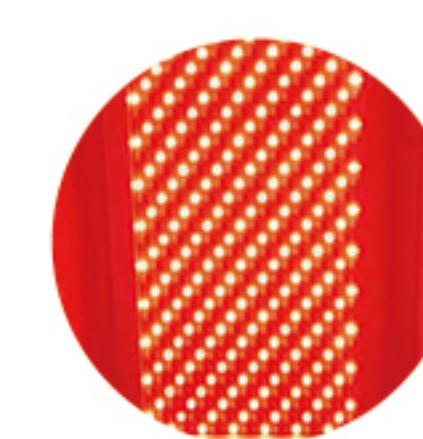
Blue Light at
469nm or 420nm



After



Before



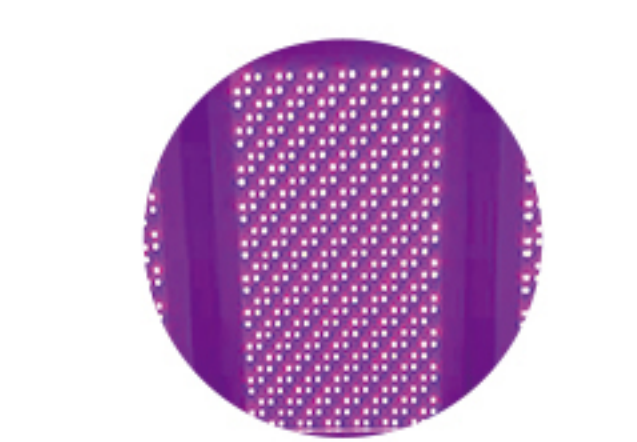
Red Light at
633nm



After



Before



Infrared Therapy at
850nm or 830nm



After



Before



Yellow Light
at 590nm



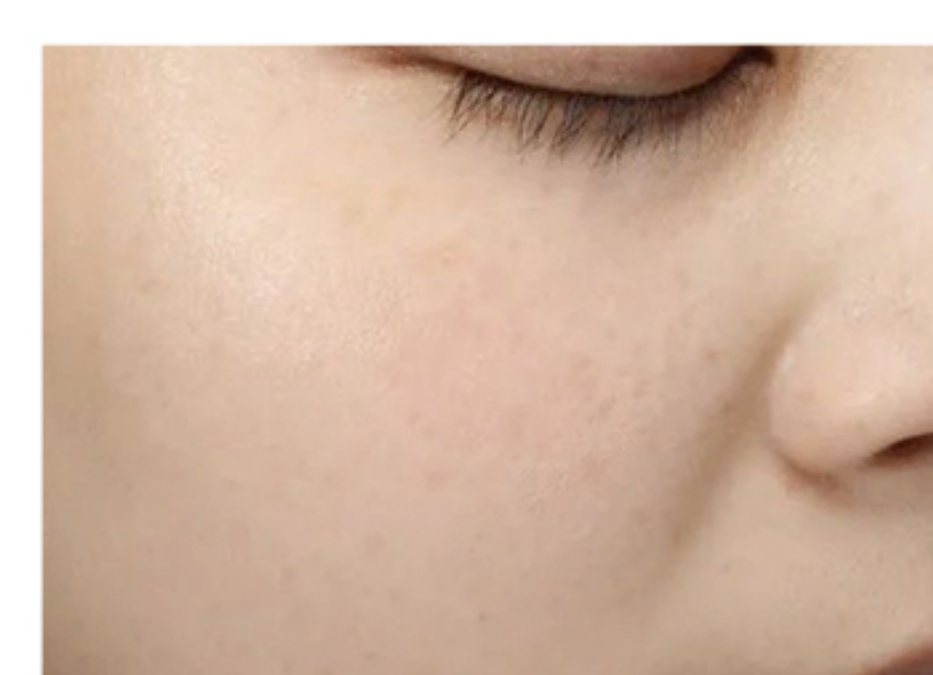
After



Before



Green Light
at 525nm



After



Specification



OL-PDT950



OL-PDT600





OL-PDT300

Model					
Separate Color	OL-PDT300&600/950 Red	OL-PDT300&600/950 Infared	OL-PDT300&600/950 Blue	OL-PDT950 Yellow	OL-PDT950 Green
Total output power	40w/55w	70w/88w	17w/26w	30w	22w
Output density	60mw/cm ² 75mw/cm ²	108mw/cm ² 120mw/cm ²	28mw/cm ² 35mw/cm ²	40mw/cm ²	30mw/cm ²
Output wavelenght	633nm	850nm or 830nm	469nm or 420nm	595nm	530nm
Bandwidth	16nm	35nm	25nm	16nm	16nm
Standard dose	72J/cm ²	64J/cm ²	40J/cm ² 38J/cm ²	48J/cm ²	36J/cm ²
Treatment time	20 min/16 min	10 min/8 min	25 min/ 18min	20 min	20 min
Dose range (adjustable)	3.6-356J/cm ² 4.5-445.5 J/cm ²	6.48-641J/cm ² 7.2-712.8 J/cm ²	1.68-166J/cm ² 2.1-207.9J/cm ²	2.4-237.6J/cm ²	1.8-178.2J/cm ²
Lamp type:	SMD LED	SMD LED	SMD LED	SMD LED	SMD LED
LED No.	1800/2400pcs	1800/2400pcs	1800/2400pcs	2400pcs	2400pcs
Unit dimensions HxWxD	500/320/600mm; 500/500/1200mm	500/320/600mm; 500/500/1200mm	500/320/600mm; 500/500/1200mm	500/500/ 1200mm	500/500/ 1200mm
Head dimensions overall LxW:	260*420mm; 480*256mm	260*420mm; 480*256mm	260*420mm; 480*256mm	480*256mm	480*256mm




Shanghai Omni Laser Skinology CO.,LTD

 Building 12-A-6F, Liando U Valley Songjiang International Enterprise Port Park, No. 1698 Minyi Road, Songjiang District, Shanghai, China

 Tel: +86-21-54847192 54847783

 info@omni-laser.com

 www.omni-lasers.com

 [www.youtube.com/
@OmniLaserSkinology](http://www.youtube.com/@OmniLaserSkinology)

